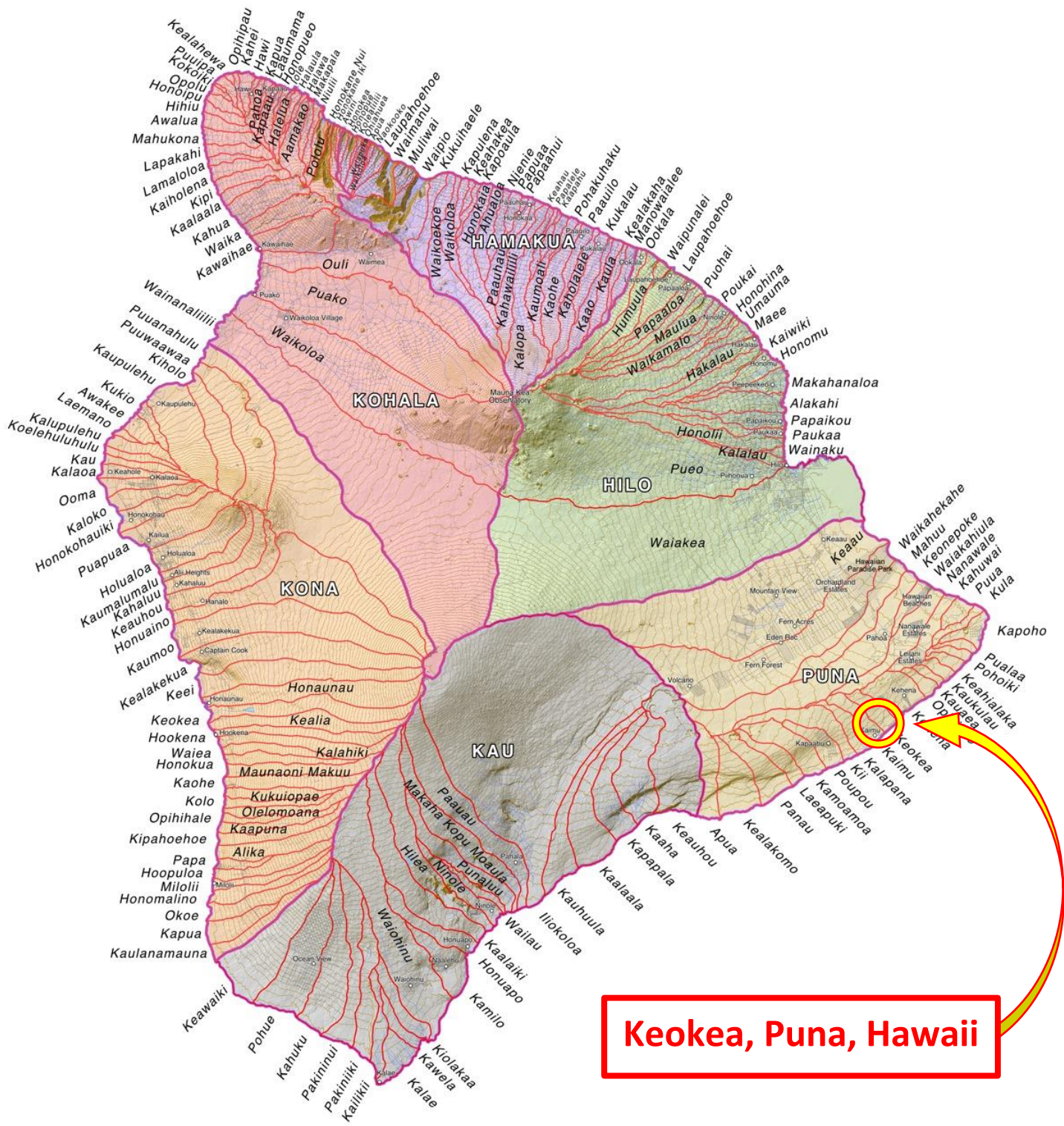
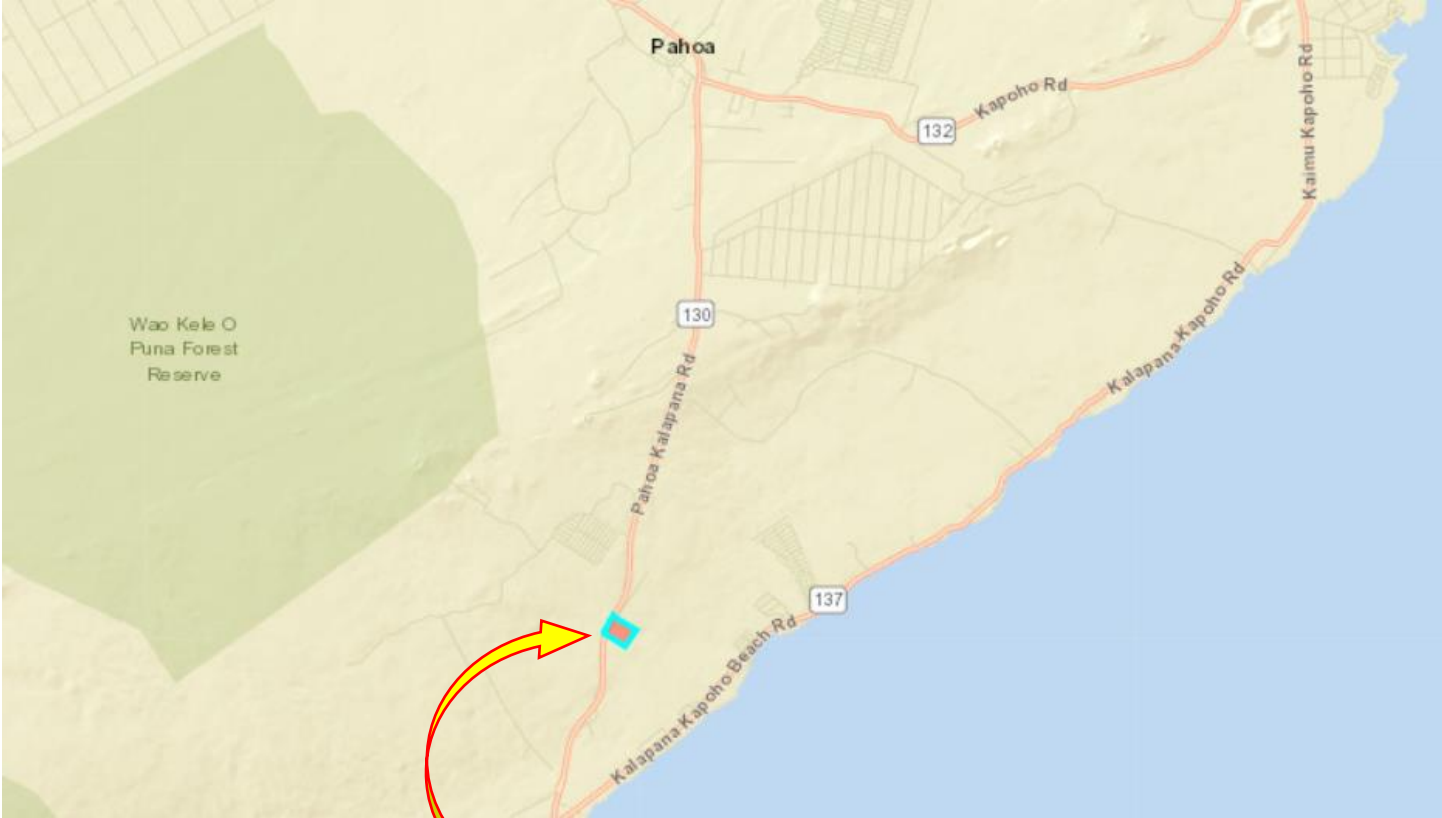


**EXHIBIT A**



**EXHIBIT A**



**TMK: (3)-1-2-007:030**



**Directions:**

- (1) Travel South from Hilo towards Kaimu on Pahoia Kalapana Road.
- (2) After passing Pahoia and Leilani Estates, pass the 1<sup>st</sup> Old Kalapana Road turnoff (unmarked) on the left side of road and look for the 18 Mile Marker on right side of road (about 300 feet past the Old Kalapana Road turnoff).
- (3) From the 18 Mile Marker continue traveling South (makai) approximately 350 feet to Pole #130 on left side of the road (a Pole #130 is also on the right side of the road).
- (4) From Pole #130 continue makai approximately 40' to entry point to Trash Site on left side of road.

**Summary Note:**

From the 18 Mile Marker pass pole # 127 on left, "Adopt A Highway" sign on right, pole #128 on left, 2<sup>nd</sup> Old Kalapana Road turnoff (unmarked) on left, unmarked pole on left, "Do Not Pass" sign on right and pole #130 on left, entry point 40' pass pole #130 on left.